

THE SYCAMORE FARM

873[±] ACRES, SYCAMORE TOWNSHIP, DEKALB COUNTY, ILLINOIS



[CLICK HERE TO SUBSCRIBE TO OUR *FARMLAND SEASONS* NEWSLETTER](#)



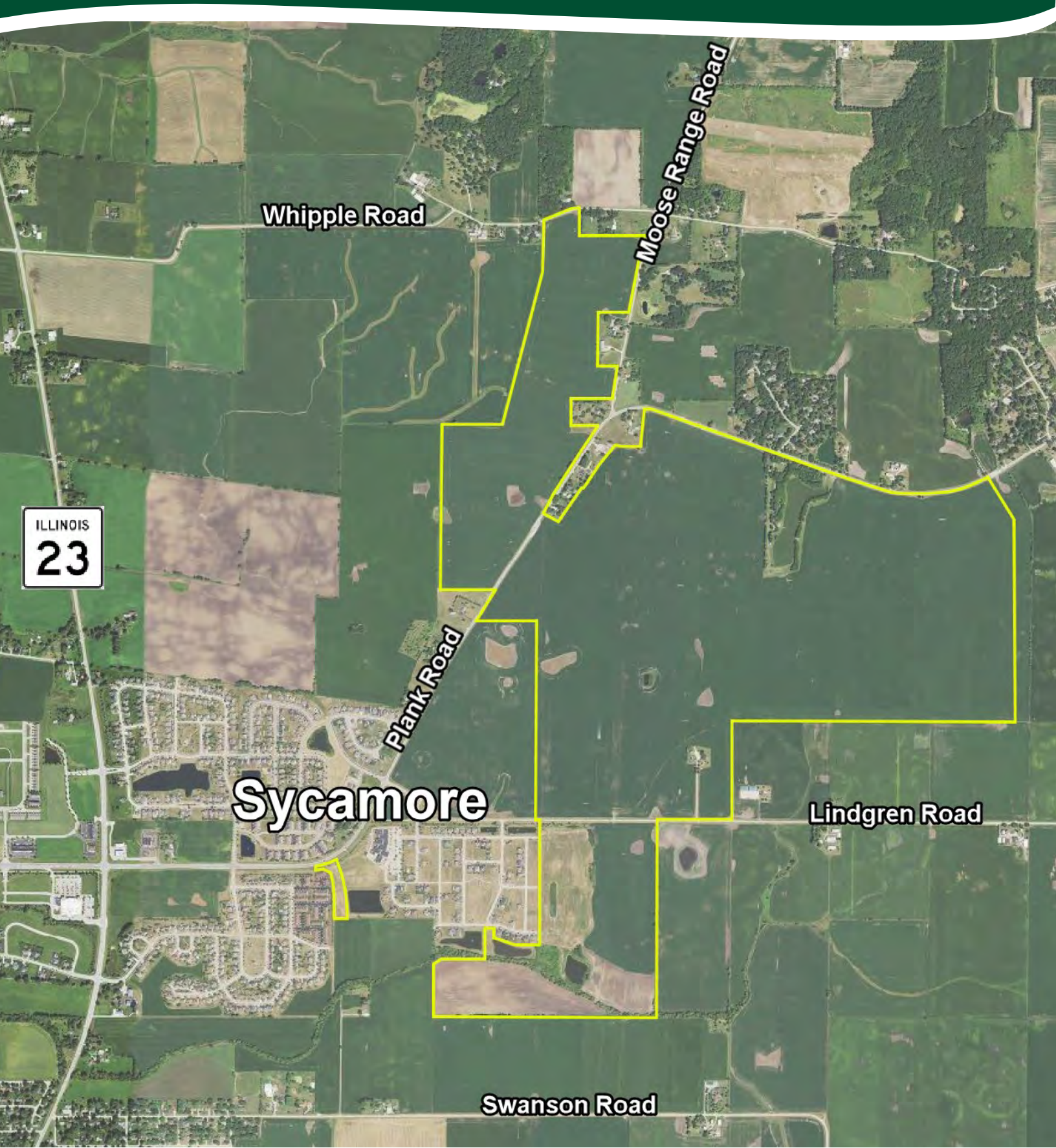
MARTIN, GOODRICH & WADDELL, INC.
REAL ESTATE SERVICES

MGW.us.com
info@mgw.us.com
(815) 756-3606

[Real Estate](#) • [Farm Management](#) • [Appraisals](#) • [Consulting](#)

THE SYCAMORE FARM

AERIAL MAP



Whipple Road

Moose Range Road

ILLINOIS
23

Plank Road

Sycamore

Lindgren Road

Swanson Road

THE SYCAMORE FARM

HIGHWAY MAP



THE SYCAMORE FARM

PROPERTY DETAILS

LOCATION	The subject farm is located approximately 37 miles west of Chicago O'Hare International Airport and is located primarily within the city of Sycamore. Nearby cities include: DeKalb (4 1/4 miles southwest), Elgin (11 miles east), and St. Charles (15 miles southeast).
FRONTAGE	There is approximately 1 1/2 miles of road frontage on Plank Road, 1/2 mile on Lindgren Road, 5/16 mile on Moose Range Road, and 1/8 mile on Whipple Road.
MAJOR HIGHWAYS	Illinois Route 23 is 1/2 mile west and Illinois Route 64 is 1 3/4 miles south of the property.
LEGAL DESCRIPTION	A brief legal description indicates The Sycamore Farm is located in Parts of Sections 10, 14, 15, 21, 22, and 23, Township 41 North - Range 5 East (Sycamore Township), DeKalb County, Illinois.
TOTAL ACRES	There are a total of 873.45 acres more or less, according to the DeKalb County Assessor.
TILLABLE ACRES	There are 787.4 leased acres.
SOIL TYPES	Major soil types found on this farm include Danabrook silt loam and Elpaso silty clay loam.
TOPOGRAPHY	The topography of the subject farm is level to gently rolling.
MINERAL RIGHTS	All mineral rights owned by the seller will be transferred in their entirety to the new owner.
POSSESSION	Possession will be given at closing, subject to the terms and conditions set forth in a purchase contract.
PRICE AND TERMS	The asking price is \$24,900 per acre. The owners are seeking a cash sale. A 10% earnest money deposit should accompany any offer to purchase.
FINANCING	Mortgage financing is available from several sources. Names and addresses will be provided upon request.
GRAIN MARKETS	There are a number of grain markets located within 15 miles of The Sycamore Farm.

THE SYCAMORE FARM

PROPERTY DETAILS

TAXES	The 2021 real estate taxes totaled \$53,607.72. The tax parcel numbers are: 06-10-300-021, 06-14-300-025, 06-15-100-019, 06-15-100-021, 06-15-300-015, 06-15-400-017, 06-15-400-018, 06-15-400-019, 06-21-400-014, 06-21-400-018, 06-22-100-004, 06-22-200-010, 06-22-200-012, 06-22-200-013, 06-22-300-008, 06-22-300-010 & 06-23-100-004.
ZONING	The Sycamore Farm is zoned R-1, Single Family Residential (City of Sycamore) and A-1, Agricultural (DeKalb County).
COMMENTS	<p>Excellent location with future development potential. Property includes a house, with a large pond and established trees. Please contact our office for information on the Solar Lease and Easement Agreement.</p> <p>The information in this brochure is considered accurate, but not guaranteed. For inquiries, inspection appointments, and offers, please contact Jeff Waddell at Martin, Goodrich & Waddell, Inc. at 815-756-3606.</p>

THE SYCAMORE FARM

PROPERTY PHOTOS



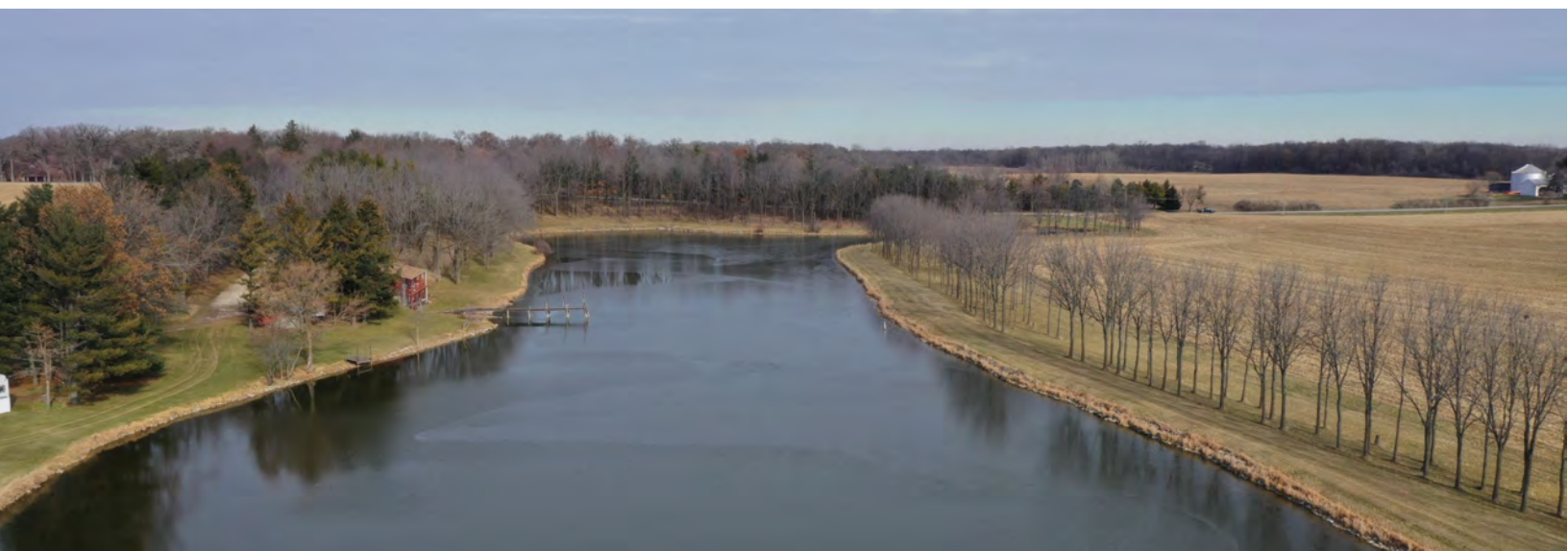
THE SYCAMORE FARM

PROPERTY PHOTOS



THE SYCAMORE FARM

PROPERTY PHOTOS



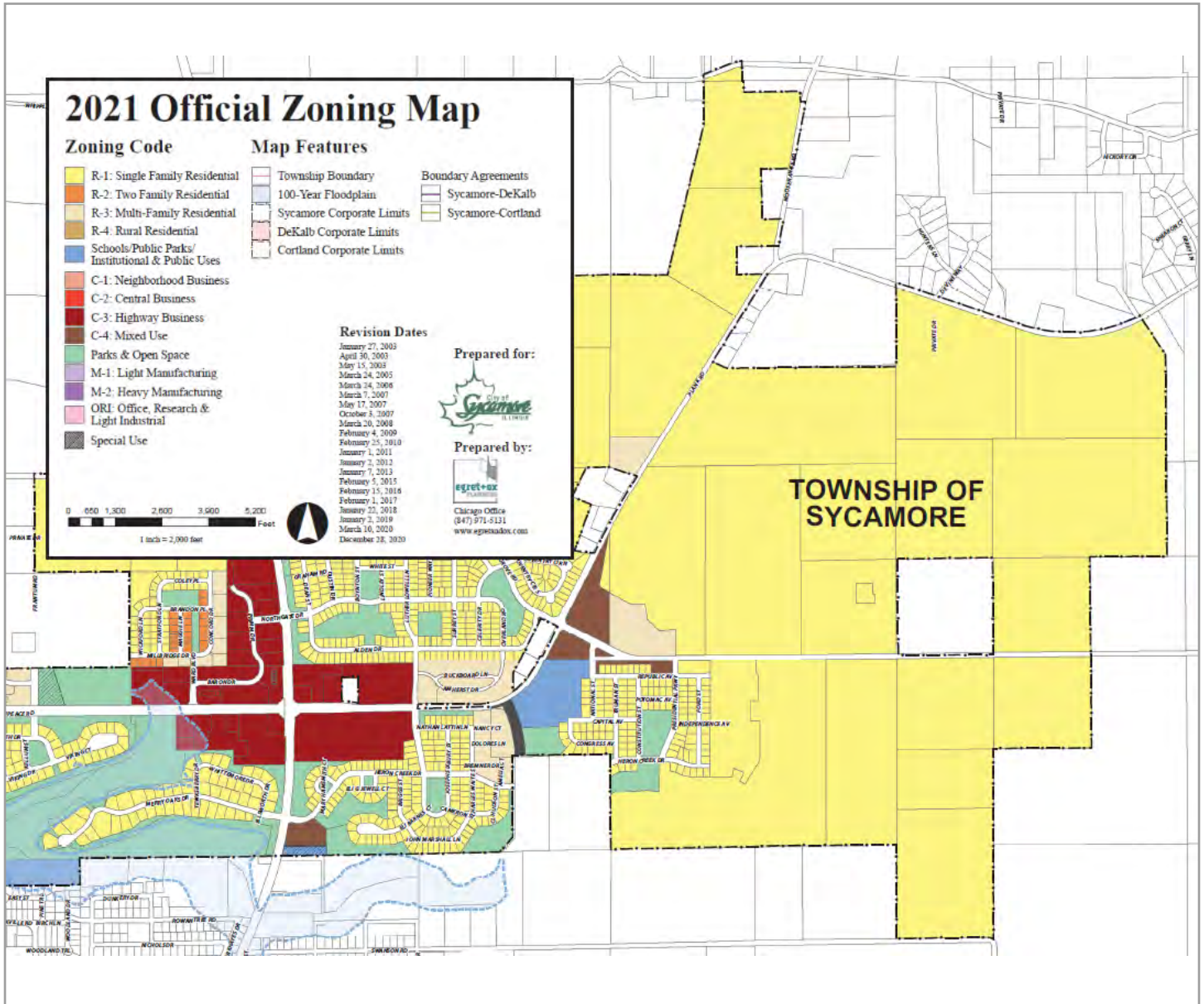
THE SYCAMORE FARM

PROPERTY PHOTOS



THE SYCAMORE FARM

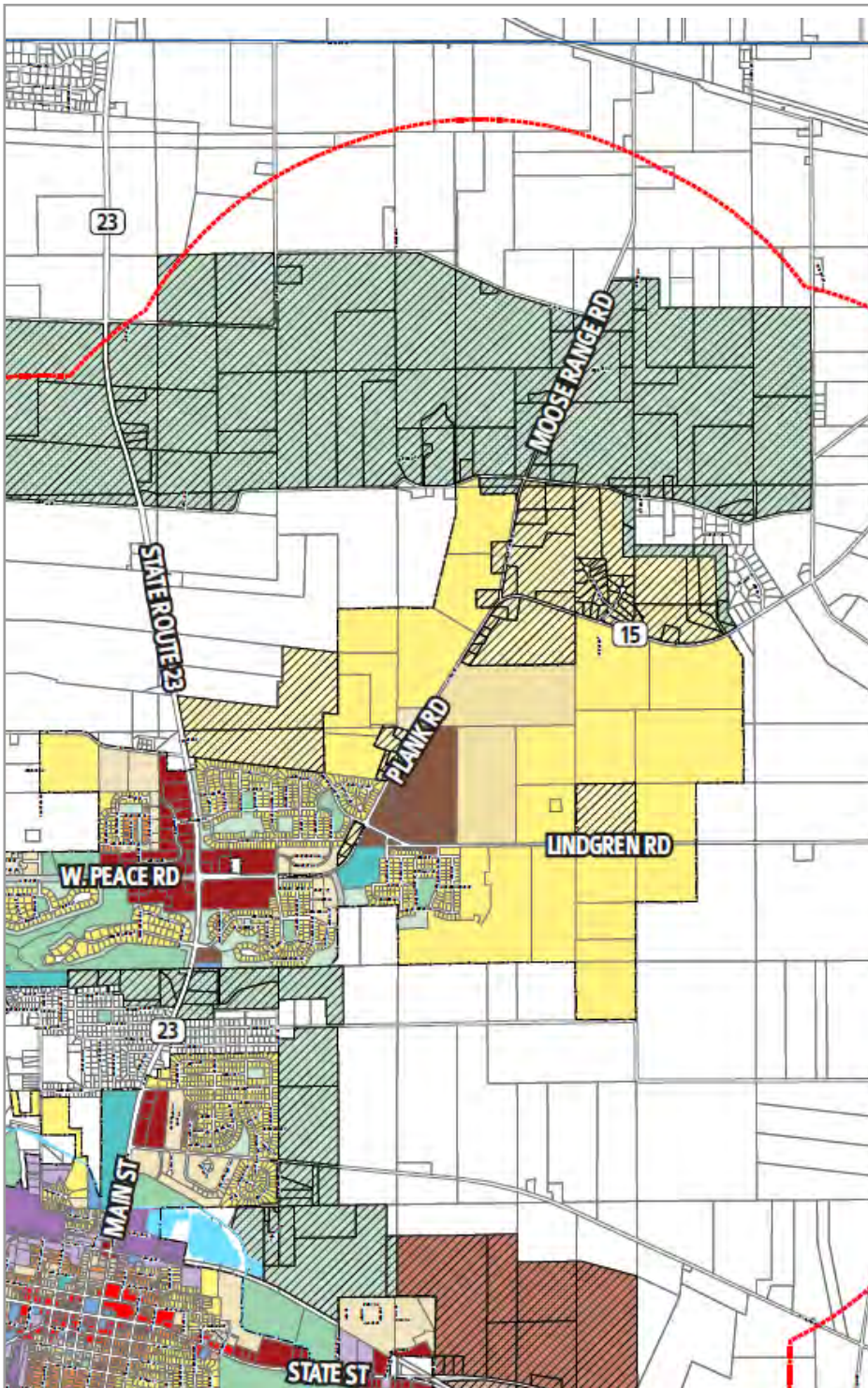
SYCAMORE ZONING MAP



The Sycamore Farm is zoned R-1, Single Family Residential (City of Sycamore) and A-1, Agricultural (DeKalb County).

THE SYCAMORE FARM

SYCAMORE FUTURE LAND USE MAP



Future Land Use Plan

EXISTING LAND USE

- R-1 Single Family Residential
- R-2 Two Family Residential
- R-3 Multi-Family Residential
- Public/Semi-Public
- Schools/Institutional
- C-1 Neighborhood Business
- C-2 Central Business
- C-3 Highway Business
- C-4 Mixed Use
- Parks
- Open Space
- M-1 Light Manufacturing
- M-2 Heavy Manufacturing
- ORI Office, Research & Light Industrial

FUTURE LAND USE

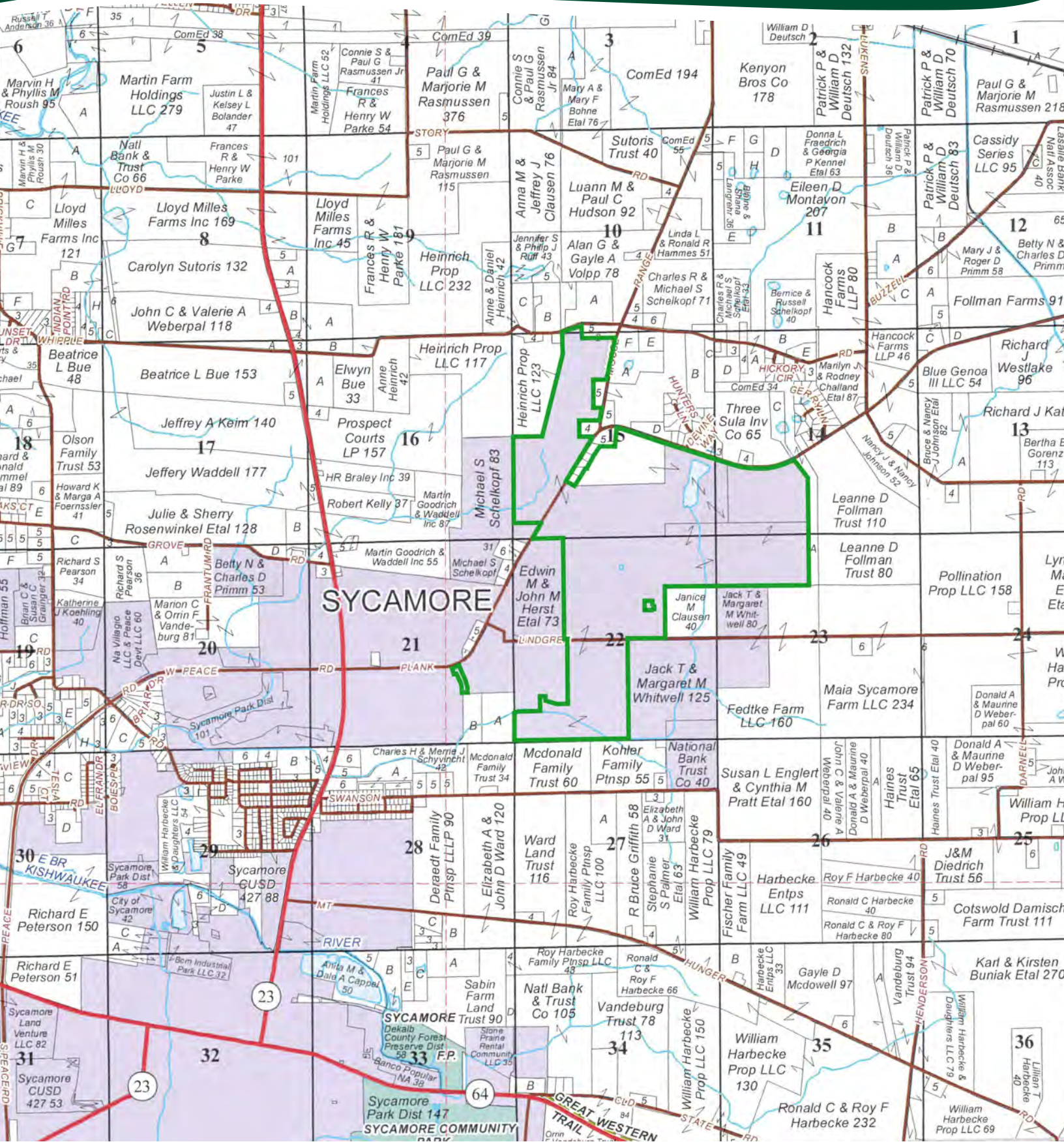
- Rural Residential
- Neighborhood Residential
- Multi-Family Residential
- Parks
- Open Space
- Green Buffer
- Commercial
- Mixed Use
- Industrial
- Office, Research & Light Industrial

BOUNDARIES

- Municipal Boundary
- Planning Boundary

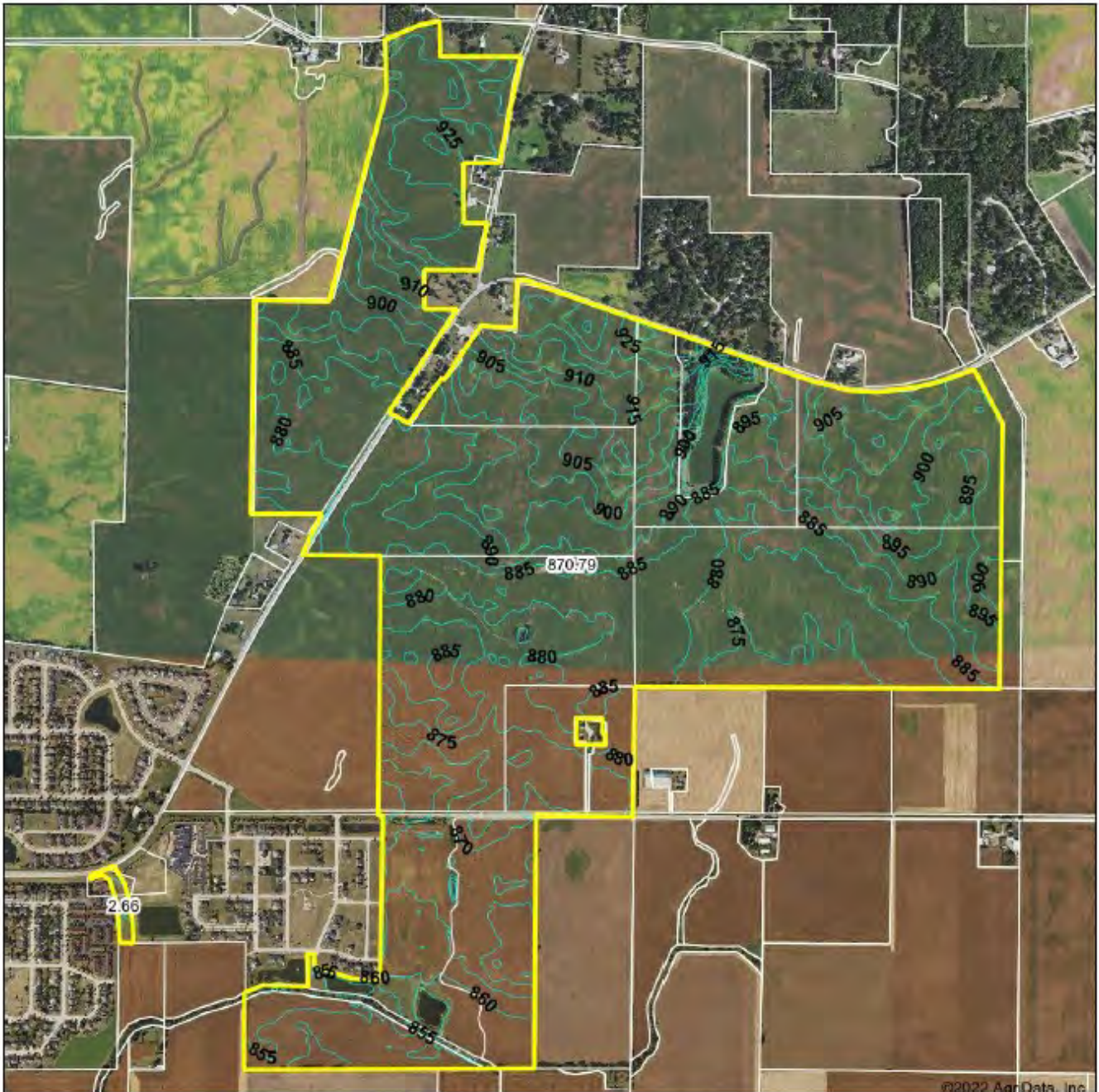
THE SYCAMORE FARM

PLAT MAP



THE SYCAMORE FARM

TOPOGRAPHY MAP



©2022 AgriData, Inc



Maps Provided By
surety
CUSTOMIZED ONLINE MAPPING
© AgriData, Inc. 2021 www.AgriData.com

Field borders provided by Farm Service Agency as of 5/21/2008.

Source: USGS 10 meter dem

Interval(ft): 5.0

Min: 848.0

Max: 934.6

Range: 86.6

Average: 887.8

Standard Deviation: 18.34 ft

0ft 1613ft 3226ft



4/15/2022

Map Center: 42.014707, -88.665185

21-41N-5E
DeKalb County
Illinois

THE SYCAMORE FARM

SOILS INFORMATION

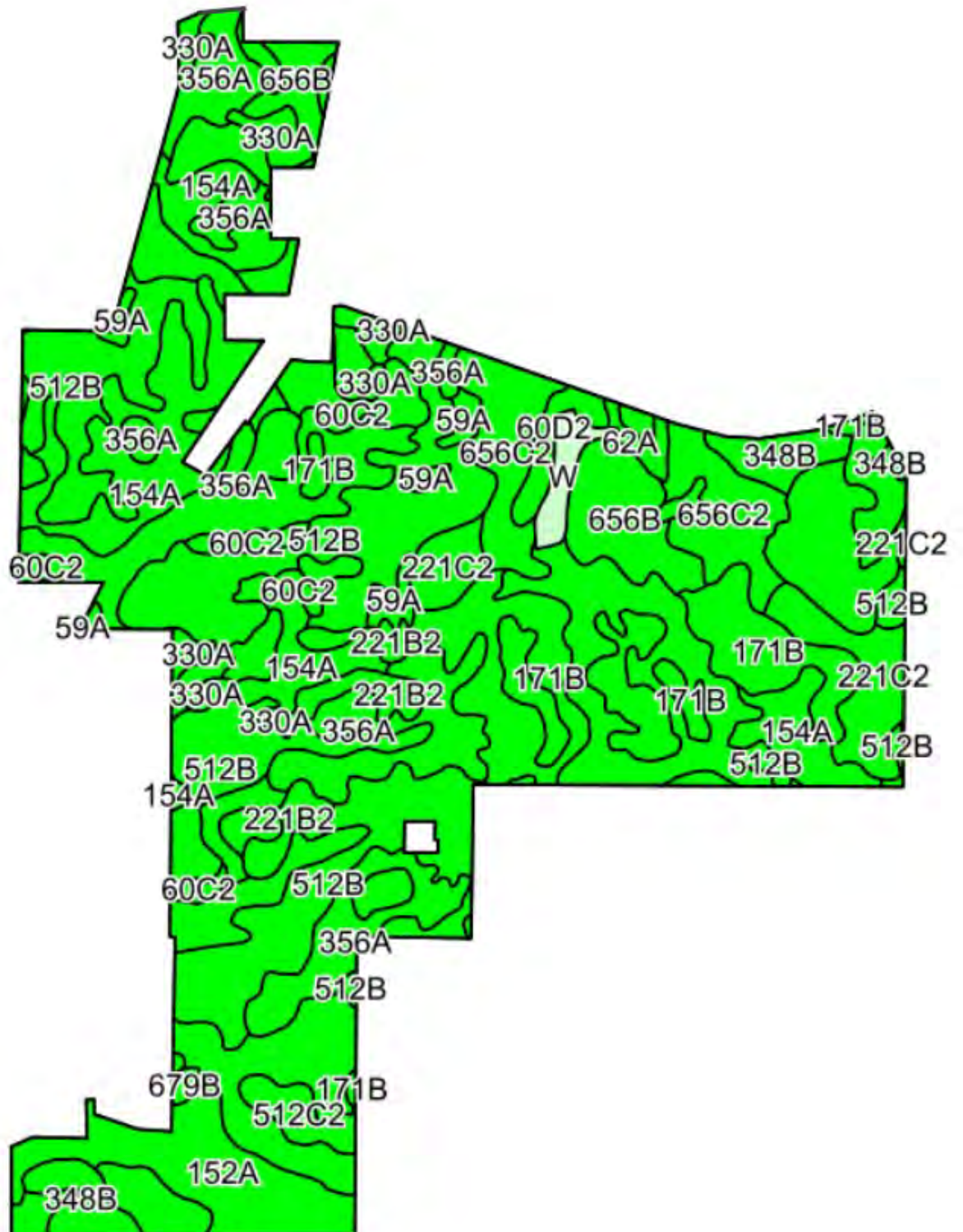
SOILS DESCRIPTIONS & PRODUCTIVITY DATA*

SOIL #	SOIL NAME	APPROX. ACRES	PRODUCTIVITY INDEX (PI)*
512B	Danabrook silt loam	164.48	137
356A	Elpaso silty clay loam	158.94	144
154A	Flanagan silt loam	96.47	144
171B	Catlin silt loam	96.28	137
656C2	Octagon silt loam	41.90	112
60C2	La Rose loam	34.22	110
656B	Octagon silt loam	31.35	117
198A	Elburn silt loam	29.34	143
221C2	Parr silt loam	28.04	111
348B	Wingate silt loam	26.73	120
330A	Peotone silty clay loam	21.08	123
221B2	Parr silt loam	18.67	113
152A	Drummer silty clay loam	14.76	144
59A	Lisbon silt loam	12.93	136
512C2	Danabrook silt loam	6.99	128
62A	Herbert silt loam	2.72	131
193B	Mayville silt loam	1.02	109
60D2	La Rose loam	0.71	105
527B	Kidami silt loam	0.68	114
67A	Harpster silty clay loam	0.09	133
WEIGHTED AVERAGE:			133.7

*Figures taken from the University of Illinois Bulletin 811, Optimum Crop Productivity Ratings for Illinois Soils.

THE SYCAMORE FARM

SOILS MAP



THE SYCAMORE FARM

APPENDIX

THE FOLLOWING PAGES CONTAIN THESE DOCUMENTS:

1. FSA DOCUMENTS
2. PIPELINE MAP
3. CITY OF SYCAMORE BUILDING PERMIT HISTORY

For more information, please visit MGW.us.com

or contact:

Jeff Waddell (815) 756-3606 | Jeff.Waddell@mgw.us.com



MARTIN, GOODRICH & WADDELL, INC.
REAL ESTATE SERVICES



United States
Department of
Agriculture

DeKalb County, Illinois



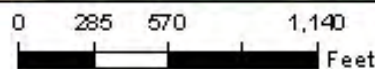
Common Land Unit

- Non-Cropland
- Cropland

Wetland Determination Identifiers

- Restricted Use
- Limited Restrictions
- Exempt from Conservation Compliance Provisions

Tract Boundary
pts_a_ill_wmas



2021 Program Year
Map Created October 23, 2020

Farm **6909**

Tract **631**

IL037_T631

Tract Cropland Total: 81.40 acres

United States Department of Agriculture (USDA) Farm Service Agency (FSA) maps are for FSA Program administration only. This map does not represent a legal survey or reflect actual ownership; rather it depicts the information provided directly from the producer and/or National Agricultural Imagery Program (NAIP) imagery. The producer accepts the data "as is" and assumes all risks associated with its use. USDA-FSA assumes no responsibility for actual or consequential damage incurred as a result of any user's reliance on this data outside FSA Programs. Wetland identifiers do not represent the size, shape, or specific determination of the area. Refer to your original determination (CPA-026 and attached maps) for exact boundaries and determinations or contact USDA Natural Resources Conservation Service (NRCS).



United States
Department of
Agriculture

DeKalb County, Illinois



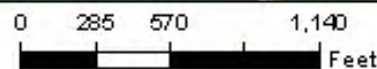
Common Land Unit

- Non-Cropland
- Cropland

Wetland Determination Identifiers

- Restricted Use
- Limited Restrictions
- Exempt from Conservation Compliance Provisions

Tract Boundary
pts_a_ILWMA5



2021 Program Year
Map Created October 25, 2020

Farm **6909**
Tract **2606**

Tract Cropland Total: 147.36 acres

IL037_T2606_A1

United States Department of Agriculture (USDA) Farm Service Agency (FSA) maps are for FSA Program administration only. This map does not represent a legal survey or reflect actual ownership; rather it depicts the information provided directly from the producer and/or National Agricultural Imagery Program (NAIP) imagery. The producer accepts the data "as is" and assumes all risks associated with its use. USDA-FSA assumes no responsibility for actual or consequential damage incurred as a result of any user's reliance on this data outside FSA Programs. Wetland identifiers do not represent the size, shape, or specific termination of the area. Refer to your original determination (CPA-026 and attached maps) for exact boundaries and determinations or contact USDA Natural Resources Conservation Service (NRCS).



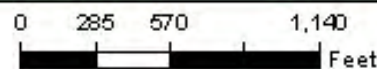
Common Land Unit

- Non-Cropland
- Cropland

Wetland Determination Identifiers

- Restricted Use
- Limited Restrictions
- Exempt from Conservation Compliance Provisions

Tract Boundary
pkis_a_illmmas



2021 Program Year
Map Created October 25, 2020

Farm **6909**
Tract **2606**

Tract Cropland Total: 147.36 acres

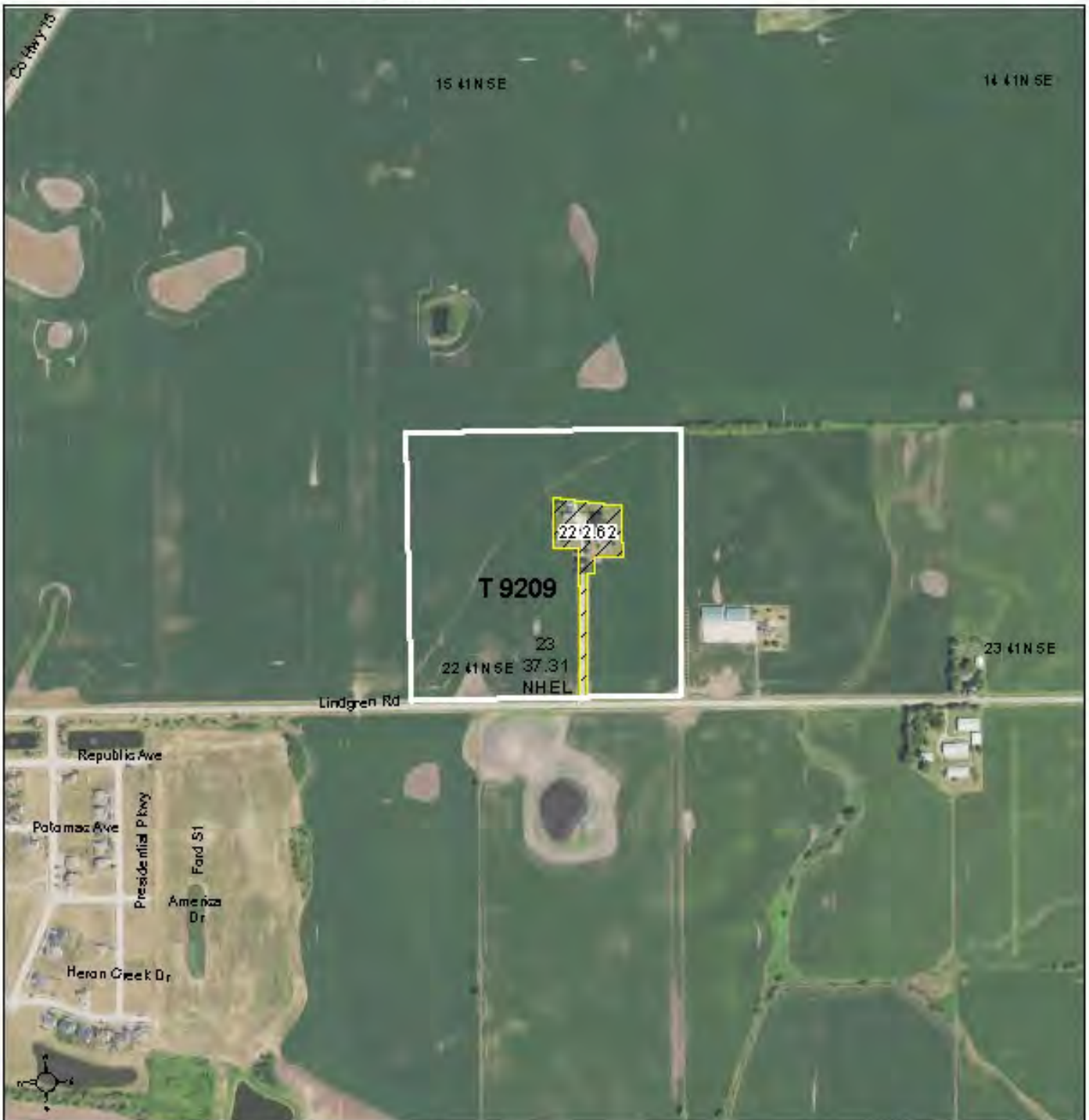
IL037_T2606_B1

United States Department of Agriculture (USDA) Farm Service Agency (FSA) maps are for FSA Program administration only. This map does not represent a legal survey or reflect actual ownership; rather it depicts the information provided directly from the producer and/or National Agricultural Imagery Program (NAIP) imagery. The producer accepts the data "as is" and assumes all risks associated with its use. USDA-FSA assumes no responsibility for actual or consequential damage incurred as a result of any user's reliance on this data outside FSA Programs. Wetland identifiers do not represent the size, shape, or specific termination of the area. Refer to your original determination (CPA-026 and attached maps) for exact boundaries and determinations or contact USDA Natural Resources Conservation Service (NRCS).



United States
Department of
Agriculture

DeKalb County, Illinois



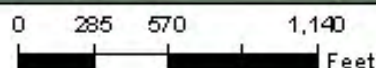
Common Land Unit

- Non-Cropland
- Cropland

Wetland Determination Identifiers

- Restricted Use
- Limited Restrictions
- Exempt from Conservation Compliance Provisions

Tract Boundary
pkis_a_illWMMAS



2021 Program Year
Map Created October 25, 2020

Farm **6909**
Tract **9209**

Tract Cropland Total: 37.31 acres

IL037_T9209

United States Department of Agriculture (USDA) Farm Service Agency (FSA) maps are for FSA Program administration only. This map does not represent a legal survey or reflect actual ownership; rather it depicts the information provided directly from the producer and/or National Agricultural Imagery Program (NAIP) imagery. The producer accepts the data "as is" and assumes all risks associated with its use. USDA-FSA assumes no responsibility for actual or consequential damage incurred as a result of any user's reliance on this data outside FSA Programs. Wetland identifiers do not represent the size, shape, or specific delineation of the area. Refer to your original determination (CPA-026 and attached maps) for exact boundaries and delineations or contact USDA Natural Resources Conservation Service (NRCS).



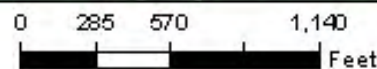
United States
Department of
Agriculture

DeKalb County, Illinois



Common Land Unit

pkss_a_il_wmas



2021 Program Year
Map Created October 25, 2020

- Cropland
- Tract Boundary
- Wetland Determination Identifiers**
- Restricted Use
- ▼ Limited Restrictions
- Exempt from Conservation Compliance Provisions

Tract Cropland Total: 54.23 acres

Farm **6909**
Tract **10227**

IL037_T10227

United States Department of Agriculture (USDA) Farm Service Agency (FSA) maps are for FSA Program administration only. This map does not represent a legal survey or reflect actual ownership; rather it depicts the information provided directly from the producer and/or National Agricultural Imagery Program (NAIP) imagery. The producer accepts the data "as is" and assumes all risks associated with its use. USDA-FSA assumes no responsibility for actual or consequential damage incurred as a result of any user's reliance on this data outside FSA Programs. Wetland identifiers do not represent the size, shape, or specific determination of the area. Refer to your original determination (CPA-026 and attached maps) for exact boundaries and determinations or contact USDA Natural Resources Conservation Service (NRCS).



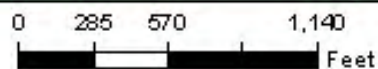
United States
Department of
Agriculture

DeKalb County, Illinois



Common Land Unit

pkgs_a_il\UMAS



2021 Program Year
Map Created October 25, 2020

- Cropland
- Tract Boundary
- Wetland Determination Identifiers**
- Restricted Use
- ▼ Limited Restrictions
- Exempt from Conservation Compliance Provisions

Tract Cropland Total: 91.10 acres

Farm **6909**
Tract **10228**

IL037_T10228

United States Department of Agriculture (USDA) Farm Service Agency (FSA) maps are for FSA Program administration only. This map does not represent a legal survey or reflect actual ownership; rather it depicts the information provided directly from the producer and/or National Agricultural Imagery Program (NAIP) imagery. The producer accepts the data "as is" and assumes all risks associated with its use. USDA-FSA assumes no responsibility for actual or consequential damage incurred as a result of any user's reliance on this data outside FSA Programs. Wetland identifiers do not represent the size, shape, or specific termination of the area. Refer to your original determination (CPA-026 and attached maps) for exact boundaries and determinations or contact USDA Natural Resources Conservation Service (NRCS).



United States
Department of
Agriculture

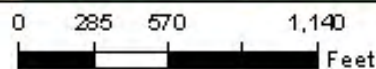
DeKalb County, Illinois



Common Land Unit

- Cropland
- Tract Boundary
- Wetland Determination Identifiers**
- Restricted Use
- ▼ Limited Restrictions
- Exempt from Conservation Compliance Provisions

pkss_a_illwmas



2021 Program Year
Map Created October 25, 2020

Farm **6909**
Tract **10229**

Tract Cropland Total: 119.80 acres

IL037_T10229

United States Department of Agriculture (USDA) Farm Service Agency (FSA) maps are for FSA Program administration only. This map does not represent a legal survey or reflect actual ownership; rather it depicts the information provided directly from the producer and/or National Agricultural Imagery Program (NAIP) imagery. The producer accepts the data "as is" and assumes all risks associated with its use. USDA-FSA assumes no responsibility for actual or consequential damage incurred as a result of any user's reliance on this data outside FSA Programs. Wetland identifiers do not represent the size, shape, or specific termination of the area. Refer to your original determination (CPA-026 and attached maps) for exact boundaries and determinations or contact USDA Natural Resources Conservation Service (NRCS).



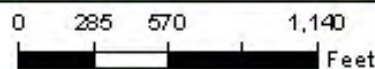
United States
Department of
Agriculture

DeKalb County, Illinois



Common Land Unit

pkss_a_il_WMAS



2021 Program Year
Map Created October 25, 2020

- Cropland
- Tract Boundary
- Wetland Determination Identifiers**
- Restricted Use
- ▼ Limited Restrictions
- Exempt from Conservation Compliance Provisions

Tract Cropland Total: 141.94 acres

Farm **6909**
Tract **10358**

IL037_T10358

United States Department of Agriculture (USDA) Farm Service Agency (FSA) maps are for FSA Program administration only. This map does not represent a legal survey or reflect actual ownership; rather it depicts the information provided directly from the producer and/or National Agricultural Imagery Program (NAIP) imagery. The producer accepts the data "as is" and assumes all risks associated with its use. USDA-FSA assumes no responsibility for actual or consequential damage incurred as a result of any user's reliance on this data outside FSA Programs. Wetland identifiers do not represent the size, shape, or specific termination of the area. Refer to your original determination (CPA-026 and attached maps) for exact boundaries and determinations or contact USDA Natural Resources Conservation Service (NRCS).



United States
Department of
Agriculture

DeKalb County, Illinois



Common Land Unit

pkss_a_il_WMAS

0 285 570 1,140

- Cropland
- Tract Boundary

Wetland Determination Identifiers

- Restricted Use
- ▼ Limited Restrictions
- Exempt from Conservation Compliance Provisions

0 285 570 1,140 Feet

2021 Program Year

Map Created October 25, 2020

Farm **6909**

Tract **10487**

Tract Cropland Total: 70.59 acres

IL037_T10487

United States Department of Agriculture (USDA) Farm Service Agency (FSA) maps are for FSA Program administration only. This map does not represent a legal survey or reflect actual ownership; rather it depicts the information provided directly from the producer and/or National Agricultural Imagery Program (NAIP) imagery. The producer accepts the data "as is" and assumes all risks associated with its use. USDA-FSA assumes no responsibility for actual or consequential damage incurred as a result of any user's reliance on this data outside FSA Programs. Wetland identifiers do not represent the size, shape, or specific determination of the area. Refer to your original determination (CPA-026 and attached maps) for exact boundaries and determinations or contact USDA Natural Resources Conservation Service (NRCS).



United States
Department of
Agriculture

DeKalb County, Illinois



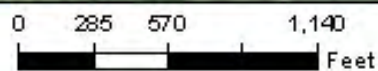
Common Land Unit

- Non-Cropland
- Cropland

Wetland Determination Identifiers

- Restricted Use
- Limited Restrictions
- Exempt from Conservation Compliance Provisions

Tract Boundary
pkgs_a_ill_WMAS



2021 Program Year

Map Created October 25, 2020

Farm **6909**

Tract **10488**

IL037_T10488

Tract Cropland Total: 48.02 acres

United States Department of Agriculture (USDA) Farm Service Agency (FSA) maps are for FSA Program administration only. This map does not represent a legal survey or reflect actual ownership; rather it depicts the information provided directly from the producer and/or National Agricultural Imagery Program (NAIP) imagery. The producer accepts the data "as is" and assumes all risks associated with its use. USDA-FSA assumes no responsibility for actual or consequential damage incurred as a result of any user's reliance on this data outside FSA Programs. Wetland identifiers do not represent the size, shape, or specific termination of the area. Refer to your original determination (CPA-026 and attached maps) for exact boundaries and determinations or contact USDA Natural Resources Conservation Service (NRCS).



United States
Department of
Agriculture

DeKalb County, Illinois



Common Land Unit

pk8_a_il\UMAS

0 285 570 1,140

- Cropland
- Tract Boundary

Feet

Wetland Determination Identifiers

- Restricted Use
- ▼ Limited Restrictions
- Exempt from Conservation
- Compliance Provisions

Tract Cropland Total: 25.49 acres

2021 Program Year

Map Created December 04, 2020

Farm **7419**

Tract **11654**

IL037_T11654

United States Department of Agriculture (USDA) Farm Service Agency (FSA) maps are for FSA Program administration only. This map does not represent a legal survey or reflect actual ownership; rather it depicts the information provided directly from the producer and/or National Agricultural Imagery Program (NAIP) imagery. The producer accepts the data "as is" and assumes all risks associated with its use. USDA-FSA assumes no responsibility for actual or consequential damage incurred as a result of any user's reliance on this data outside FSA Programs. Wetland identifiers do not represent the size, shape, or specific determination of the area. Refer to your original determination (CPA-026 and attached maps) for exact boundaries and determinations or contact USDA Natural Resources Conservation Service (NRCS).

FARM: 6909

Illinois
DeKalb

U.S. Department of Agriculture
Farm Service Agency

Prepared: 12/1/21 9:31 AM
Crop Year: 2022

Report ID: FSA-156EZ

Abbreviated 156 Farm Record

Page: 1 of 6

DISCLAIMER: This is data extracted from the web farm database. Because of potential messaging failures in MIDAS, this data is not guaranteed to be an accurate and complete representation of data contained in the MIDAS system, which is the system of record for Farm Records.

Operator Name Farm Identifier Recon Number
C12-5955 + 6907 = 6909 2012 - 50

Farms Associated with Operator:

ARC/PLC G//F Eligibility: Eligible

CRP Contract Number(s): None

Farmland	Cropland	DCP Cropland	WBP	WRP	EWP	CRP Cropland	GRP	Farm Status	Number of Tracts
835.27	791.75	791.75	0.0	0.0	0.0	0.0	0.0	Active	9
State Conservation	Other Conservation	Effective DCP Cropland	Double Cropped	MPL/FWP					
0.0	0.0	791.75	0.0	0.0					

ARC/PLC

PLC	ARC-CO	ARC-IC	PLC-Default	ARC-CO-Default	ARC-IC-Default
CORN	SOYBN	NONE	NONE	NONE	NONE

Crop	Base Acreage	PLC Yield	CCC-505 CRP Reduction	HIP
CORN	775.24	147	0.00	
SOYBEANS	9.26	36	0.00	0
Total Base Acres:	784.5			

Tract Number: 631 Description F9/2 SEC 21 & 22 SYCAMORE
FSA Physical Location: DeKalb, IL ANSI Physical Location: DeKalb, IL

BIA Range Unit Number:

HEL Status: NHEL: no agricultural commodity planted on undetermined fields

Wetland Status: Tract does not contain a wetland

WL Violations: None

Farmland	Cropland	DCP Cropland	WBP	WRP	EWP	CRP Cropland	GRP
92.47	81.4	81.4	0.0	0.0	0.0	0.0	0.0
State Conservation	Other Conservation	Effective DCP Cropland	Double Cropped	MPL/FWP			
0.0	0.0	81.4	0.0	0.0			

Crop	Base Acreage	PLC Yield	CCC-505 CRP Reduction
CORN	79.69	147	0.00
SOYBEANS	0.95	36	0.00
Total Base Acres:	80.64		

Owners:

FARM: 6909

Illinois

U.S. Department of Agriculture

Prepared: 12/1/21 9:31 AM

DeKalb

Farm Service Agency

Crop Year: 2022

Report ID: FSA-156EZ

Abbreviated 156 Farm Record

Page: 2 of 6

DISCLAIMER: This is data extracted from the web farm database. Because of potential messaging failures in MIDAS, this data is not guaranteed to be an accurate and complete representation of data contained in the MIDAS system, which is the system of record for Farm Records.

Other Producers: None

Tract Number: 2606 Description E10/1 & 4 Sec 15 Sycamore

FSA Physical Location : DeKalb, IL

ANSI Physical Location: DeKalb, IL

BIA Range Unit Number:

HEL Status: HEL: conservation system is being actively applied

Wetland Status: Wetland determinations not complete

WL Violations: None

Farmland	Cropland	DCP Cropland	WBP	WRP	EWP	CRP Cropland	GRP
154.94	147.36	147.36	0.0	0.0	0.0	0.0	0.0
State Conservation	Other Conservation	Effective DCP Cropland	Double Cropped	MPL/FWP			
0.0	0.0	147.36	0.0	0.0			

Crop	Base Acreage	PLC Yield	CCC-505 CRP Reduction
CORN	144.21	147	0.00
SOYBEANS	1.72	36	0.00
Total Base Acres:	145.93		

Owners:

Other Producers: None

Tract Number: 9209 Description E10/4 Sec 22 Sycamore

FSA Physical Location : DeKalb, IL

ANSI Physical Location: DeKalb, IL

BIA Range Unit Number:

HEL Status: NHEL: no agricultural commodity planted on undetermined fields

Wetland Status: Wetland determinations not complete

WL Violations: None

Farmland	Cropland	DCP Cropland	WBP	WRP	EWP	CRP Cropland	GRP
39.93	37.31	37.31	0.0	0.0	0.0	0.0	0.0
State Conservation	Other Conservation	Effective DCP Cropland	Double Cropped	MPL/FWP			
0.0	0.0	37.31	0.0	0.0			

Crop	Base Acreage	PLC Yield	CCC-505 CRP Reduction
CORN	36.51	147	0.00
SOYBEANS	0.44	36	0.00
Total Base Acres:	36.95		

Owners:

FARM: 6909

Illinois

U.S. Department of Agriculture

Prepared: 12/1/21 9:31 AM

DeKalb

Farm Service Agency

Crop Year: 2022

Report ID: FSA-156EZ

Abbreviated 156 Farm Record

Page: 3 of 6

DISCLAIMER: This is data extracted from the web farm database. Because of potential messaging failures in MIDAS, this data is not guaranteed to be an accurate and complete representation of data contained in the MIDAS system, which is the system of record for Farm Records.

Other Producers: None

Tract Number: 10227 Description E10/ SEC 15 SYCAMORE

FSA Physical Location : DeKalb, IL ANSI Physical Location: DeKalb, IL

BIA Range Unit Number:

HEL Status: HEL: conservation system is being actively applied

Wetland Status: Wetland determinations not complete

WL Violations: None

Farmland	Cropland	DCP Cropland	WBP	WRP	EWP	CRP Cropland	GRP
54.23	54.23	54.23	0.0	0.0	0.0	0.0	0.0
State Conservation	Other Conservation	Effective DCP Cropland	Double Cropped	MPL/FWP			
0.0	0.0	54.23	0.0	0.0			

Crop	Base Acreage	PLC Yield	CCC-505 CRP Reduction
CORN	53.1	147	0.00
SOYBEANS	0.63	36	0.00
Total Base Acres:	53.73		

Owners:

Other Producers: None

Tract Number: 10228 Description E10/SEC 15 SYCAMORE

FSA Physical Location : DeKalb, IL ANSI Physical Location: DeKalb, IL

BIA Range Unit Number:

HEL Status: HEL: conservation system is being actively applied

Wetland Status: Tract contains a wetland or farmed wetland

WL Violations: None

Farmland	Cropland	DCP Cropland	WBP	WRP	EWP	CRP Cropland	GRP
91.1	91.1	91.1	0.0	0.0	0.0	0.0	0.0
State Conservation	Other Conservation	Effective DCP Cropland	Double Cropped	MPL/FWP			
0.0	0.0	91.1	0.0	0.0			

Crop	Base Acreage	PLC Yield	CCC-505 CRP Reduction
CORN	89.23	147	0.00
SOYBEANS	1.07	36	0.00
Total Base Acres:	90.3		

Owners:

FARM: 6909

Illinois
DeKalb

U.S. Department of Agriculture
Farm Service Agency

Prepared: 12/1/21 9:31 AM
Crop Year: 2022

Report ID: FSA-156EZ

Abbreviated 156 Farm Record

Page: 4 of 6

DISCLAIMER: This is data extracted from the web farm database. Because of potential messaging failures in MIDAS, this data is not guaranteed to be an accurate and complete representation of data contained in the MIDAS system, which is the system of record for Farm Records.

Other Producers: None

Tract Number: 10229 Description E10/ SEC 22 SYCAMORE

FSA Physical Location : DeKalb, IL ANSI Physical Location: DeKalb, IL

BIA Range Unit Number:

HEL Status: HEL: conservation system is being actively applied

Wetland Status: Tract contains a wetland or farmed wetland

WL Violations: None

Farmland	Cropland	DCP Cropland	WBP	WRP	EWP	CRP Cropland	GRP
119.8	119.8	119.8	0.0	0.0	0.0	0.0	0.0
State Conservation	Other Conservation	Effective DCP Cropland	Double Cropped	MPL/FWP			
0.0	0.0	119.8	0.0	0.0			

Crop	Base Acreage	PLC Yield	CCC-505 CRP Reduction
CORN	117.29	147	0.00
SOYBEANS	1.4	36	0.00
Total Base Acres:	118.69		

Owners:

Other Producers: None

Tract Number: 10358 Description E10 SEC 14, 15, 22, 23 SYCAMORE TWP

FSA Physical Location : DeKalb, IL ANSI Physical Location: DeKalb, IL

BIA Range Unit Number:

HEL Status: HEL: conservation system is being actively applied

Wetland Status: Wetland determinations not complete

WL Violations: None

Farmland	Cropland	DCP Cropland	WBP	WRP	EWP	CRP Cropland	GRP
141.94	141.94	141.94	0.0	0.0	0.0	0.0	0.0
State Conservation	Other Conservation	Effective DCP Cropland	Double Cropped	MPL/FWP			
0.0	0.0	141.94	0.0	0.0			

Crop	Base Acreage	PLC Yield	CCC-505 CRP Reduction
CORN	139.0	147	0.00
SOYBEANS	1.66	36	0.00
Total Base Acres:	140.66		

Owners:

FARM: 6909

Illinois

U.S. Department of Agriculture

Prepared: 12/1/21 9:31 AM

DeKalb

Farm Service Agency

Crop Year: 2022

Report ID: FSA-156EZ

Abbreviated 156 Farm Record

Page: 5 of 6

DISCLAIMER: This is data extracted from the web farm database. Because of potential messaging failures in MIDAS, this data is not guaranteed to be an accurate and complete representation of data contained in the MIDAS system, which is the system of record for Farm Records.

Other Producers: None

Tract Number: 10487 Description E10 SEC 14, 15, 22, 23 SYCAMORE TWP

FSA Physical Location : DeKalb, IL ANSI Physical Location: DeKalb, IL

BIA Range Unit Number:

HEL Status: HEL: conservation system is being actively applied

Wetland Status: Wetland determinations not complete

WL Violations: None

Farmland	Cropland	DCP Cropland	WBP	WRP	EWP	CRP Cropland	GRP
70.59	70.59	70.59	0.0	0.0	0.0	0.0	0.0
State Conservation	Other Conservation	Effective DCP Cropland	Double Cropped	MPL/FWP			
0.0	0.0	70.59	0.0	0.0			

Crop	Base Acreage	PLC Yield	CCC-505 CRP Reduction
CORN	69.15	147	0.00
SOYBEANS	0.83	36	0.00
Total Base Acres:	69.98		

Owners:

Other Producers: None

Tract Number: 10488 Description E10 SEC 14, 15, 22, 23 SYCAMORE TWP

FSA Physical Location : DeKalb, IL ANSI Physical Location: DeKalb, IL

BIA Range Unit Number:

HEL Status: HEL: conservation system is being actively applied

Wetland Status: Tract contains a wetland or farmed wetland

WL Violations: None

Farmland	Cropland	DCP Cropland	WBP	WRP	EWP	CRP Cropland	GRP
70.27	48.02	48.02	0.0	0.0	0.0	0.0	0.0
State Conservation	Other Conservation	Effective DCP Cropland	Double Cropped	MPL/FWP			
0.0	0.0	48.02	0.0	0.0			

Crop	Base Acreage	PLC Yield	CCC-505 CRP Reduction
CORN	47.06	147	0.00
SOYBEANS	0.56	36	0.00
Total Base Acres:	47.62		

Owners:

FARM: 7419

Illinois
DeKalb

U.S. Department of Agriculture
Farm Service Agency

Prepared: 12/1/21 9:31 AM
Crop Year: 2022
Page: 1 of 2

Report ID: FSA-156EZ

Abbreviated 156 Farm Record

DISCLAIMER: This is data extracted from the web farm database. Because of potential messaging failures in MIDAS, this data is not guaranteed to be an accurate and complete representation of data contained in the MIDAS system, which is the system of record for Farm Records.

Operator Name Farm Identifier

Farms Associated with Operator:

ARC/PLC G//F Eligibility: Eligible

CRP Contract Number(s): None

Farmland	Cropland	DCP Cropland	WBP	WRP	EWP	CRP Cropland	GRP	Farm Status	Number of Tracts
25.49	25.49	25.49	0.0	0.0	0.0	0.0	0.0	Active	1
State Conservation	Other Conservation	Effective DCP Cropland	Double Cropped	MPL/FWP					
0.0	0.0	25.49	0.0	0.0					

Tract Number: 11654 Description Sycamore Twp Sec21

FSA Physical Location : DeKalb, IL ANSI Physical Location: DeKalb, IL

BIA Range Unit Number:

HEL Status: HEL Determinations not complete

Wetland Status: Wetland determinations not complete

WL Violations: None

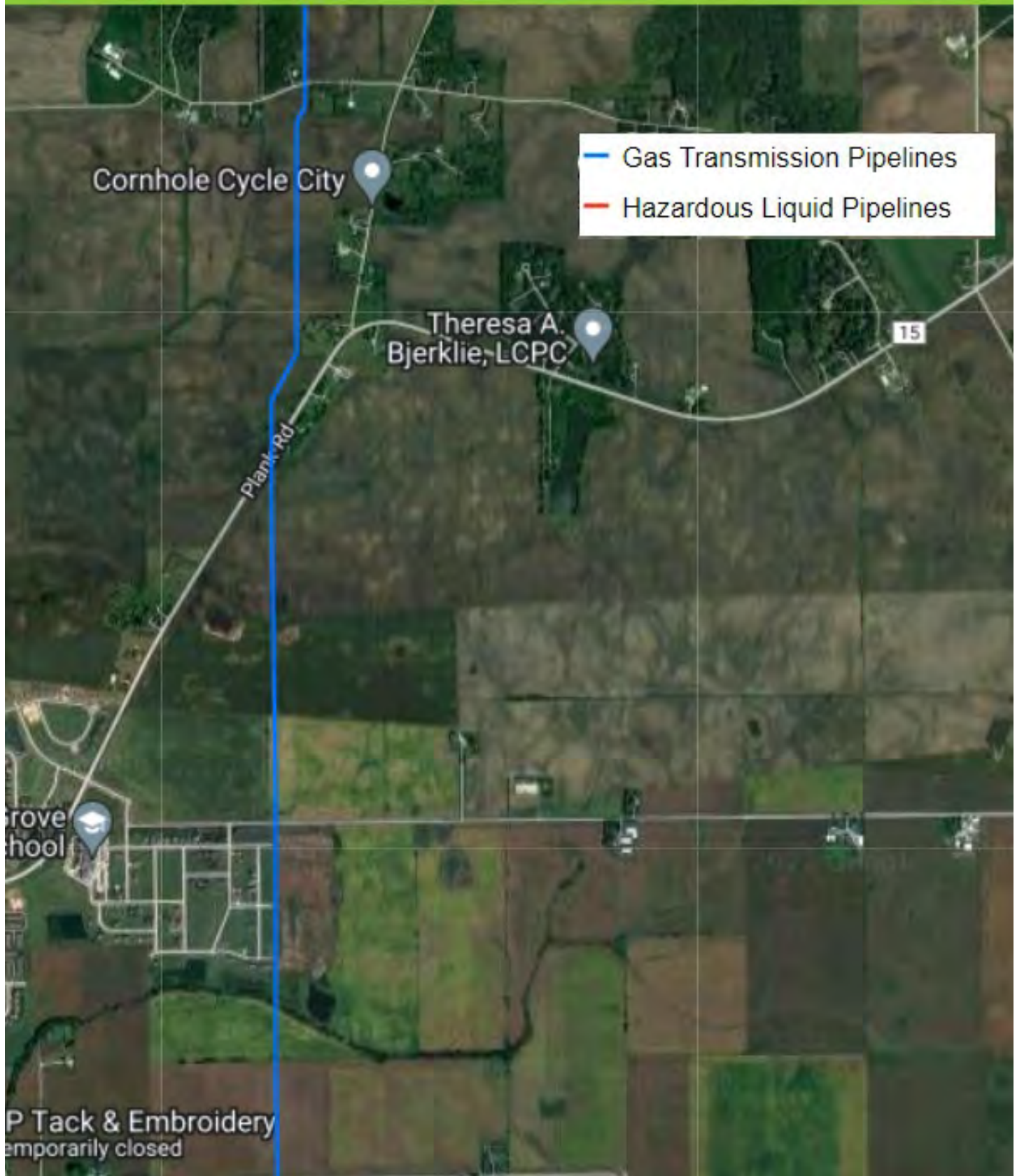
Farmland	Cropland	DCP Cropland	WBP	WRP	EWP	CRP Cropland	GRP
25.49	25.49	25.49	0.0	0.0	0.0	0.0	0.0
State Conservation	Other Conservation	Effective DCP Cropland	Double Cropped	MPL/FWP			
0.0	0.0	25.49	0.0	0.0			

Owners:

Other Producers: None



NATIONAL PIPELINE MAPPING SYSTEM



- Gas Transmission Pipelines
- Hazardous Liquid Pipelines

Cornhole Cycle City

Theresa A. Bjerklie, LCPC

Plank Rd

15

grove school

P Tack & Embroidery temporarily closed

CITY OF SYCAMORE BUILDING PERMIT HISTORY

Year	SF DET		SF ATT		MF		SF DET		TOTAL DWELLINGS		COMMERCIAL		INDUSTRIAL		Misc*	TOTAL VALUATION	TOTAL VALUATION
	No.	Valuation	No.	Valuation	No.	Valuation	No.	Valuation	No.	Valuation	No.	Valuation	No.	Valuation			
1995	32	\$4,098,045	16	\$1,190,000	22	\$890,000	32	\$6,178,045	11	\$11,693,000	1	\$1,808,000	\$811,805	\$19,679,045	\$20,490,850		
1996	38	\$3,908,650	32	\$2,147,000	42	\$1,656,304	38	\$7,711,954	8	\$2,266,500	7	\$97,000	\$1,135,763	\$10,075,454	\$11,211,157		
1997	45	\$5,734,300	17	\$1,275,000	26	\$1,290,000	45	\$8,299,300	5	\$5,550,000	9	\$2,100,000	\$1,210,362	\$15,949,300	\$17,159,662		
1998	65	\$8,753,100	35	\$2,445,767	40	\$2,354,304	65	\$13,553,171	23	\$10,829,250	2	\$194,000	\$678,289	\$24,576,421	\$25,254,710		
1999	64	\$8,469,000	49	\$3,200,000	30	\$2,316,000	64	\$13,985,000	33	\$11,584,000	3	\$1,237,000	\$399	\$26,806,000	\$26,806,399		
2000	88	\$13,059,400	20	\$1,975,000	20	\$1,818,000	88	\$16,852,400	22	\$5,324,066	3	\$196,000	\$1,344,101	\$22,372,466	\$23,716,567		
2001	78	\$12,677,600	35	\$2,731,000	31	\$2,416,000	78	\$17,824,600	22	\$9,341,867	4	\$3,993,000	\$981,346	\$31,159,467	\$32,140,813		
2002	114	\$20,004,600	69	\$6,874,000	14	\$732,000	114	\$27,610,600	33	\$7,582,420	2	\$3,905,000	\$1,130,222	\$39,098,020	\$40,228,242		
2003	139	\$27,601,170	76	\$7,053,000	43	\$2,575,000	139	\$37,229,170	24	\$3,881,300	3	\$1,437,000	\$1,301,612	\$42,547,470	\$43,849,082		
2004	197	\$36,118,212	44	\$4,067,000	90	\$5,791,650	197	\$45,976,862	20	\$8,817,012	5	\$6,805,000	\$2,226,460	\$61,598,874	\$63,825,334		
2005	248	\$63,837,224	165	\$14,193,000	292	\$15,440,625	248	\$93,470,849	50	\$14,472,556	6	\$1,719,000	\$2,530,378	\$109,662,405	\$112,192,783		
2006	159	\$40,346,932	79	\$8,067,500	127	\$6,424,250	159	\$54,838,682	54	\$9,779,554	6	\$2,651,800	\$2,284,298	\$67,270,036	\$69,554,334		
2007	75	\$15,025,398	57	\$5,815,000	95	\$4,870,000	75	\$25,710,398	66	\$19,801,296	9	\$3,860,393	\$2,179,982	\$49,372,087	\$51,552,069		
2008	14	\$3,279,220	13	\$4,464,000	7	\$2,362,000	34	\$10,105,220	43	\$15,398,500	11	\$4,980,000	\$1,555,143	\$30,483,720	\$32,038,863		
2009	10	\$2,951,000	4	\$1,503,000	2	\$3,618,390	16	\$8,072,390	46	\$4,713,724	2	\$451,000	-\$2,720,285	\$13,237,114	\$10,516,829		
2010	19	\$4,261,000	0	\$0	1	\$240,000	20	\$4,501,000	69	\$8,717,432	13	\$8,803,100	\$2,023,555	\$22,021,532	\$24,045,087		
2011	16	\$2,568,700	2	\$660,000	0	\$0	18	\$3,228,700	91	\$17,235,645	15	\$369,620	\$1,486,560	\$20,833,965	\$22,320,525		
2012	13	\$2,589,000	0	\$0	3	\$1,388,000	16	\$3,977,000	112	\$11,779,011	16	\$1,280,100	\$1,543,555	\$17,036,111	\$18,579,666		
2013	30	\$6,109,500	0	\$0	7	\$3,469,000	37	\$9,578,500	91	\$7,974,570	11	\$1,523,275	\$2,824,425	\$19,076,345	\$21,900,770		
2014	39	\$6,998,965	0	\$0	9	\$3,627,000	48	\$10,625,965	86	\$9,335,675	7	\$48,000	\$1,486,338	\$20,009,640	\$21,495,988		
2015	48	\$9,776,000	2	\$675,000	9	\$3,504,000	59	\$13,955,000	101	\$6,052,668	12	\$18,200,919	\$1,899,933	\$38,208,607	\$40,108,540		
2016	50	\$9,564,500	0	\$0	4	\$2,731,000	54	\$12,295,500	123	\$34,882,295	15	\$3,791,145	\$2,018,237	\$60,968,940	\$62,987,177		
2017	46	\$10,061,300	0	\$0	3	\$1,966,000	49	\$12,027,300	107	\$50,879,621	25	\$3,106,409	\$5,588,387	\$66,013,330	\$71,601,717		
2018	53	\$11,971,164	0	\$0	4	\$1,116,000	57	\$13,087,164	103	\$5,404,187	21	\$6,397,250	\$2,568,933	\$24,888,601	\$27,457,534		
2019	38	\$8,675,500	1	\$260,000	3	\$1,606,327	41	\$10,541,827	120	\$43,255,267	19	\$5,388,391	\$3,985,702	\$59,185,465	\$63,171,187		
2020	41	\$11,426,520	0	\$0	3	\$2,300,000	45	\$14,526,520	94	\$13,327,933	19	\$14,345,850	\$4,342,660	\$42,200,303	\$46,542,963		
2021	42	\$13,259,200	3	\$900,000	3	\$2,350,000	50	\$16,509,200	106	\$6,984,567	17	\$629,498	\$4,884,286	\$24,123,265	\$29,007,551		
No. = Number of buildings																	
Units = Dwellings per building																	
SF DET = Single Family Detached (New Construction) R1 & R4																	
SF ATT = Single Family Attached (New Construction) (2 units Duplex/Townhome) R2 & R3																	
MF = Multi-Family (New Construction) (3 units or more Condos/Rentals) R3																	
COMMERCIAL = (includes additions and remodeling and Govt./Inst/Educational) C1-C4 & INST. PUB USE																	
INDUSTRIAL = (includes additions and remodeling) M1, M2 & ORI																	
*Misc. = includes residential remodeling, accessory structures, decks, fences, signs, electrical & plumbing upgrades, etc.																	



MARTIN, GOODRICH & WADDELL, INC.
REAL ESTATE SERVICES

Real Estate

Farm Management

Appraisals

Consulting



[CLICK HERE TO SUBSCRIBE TO OUR *FARMLAND SEASONS* NEWSLETTER](#)

MGW.us.com
info@mgw.us.com
(815) 756-3606